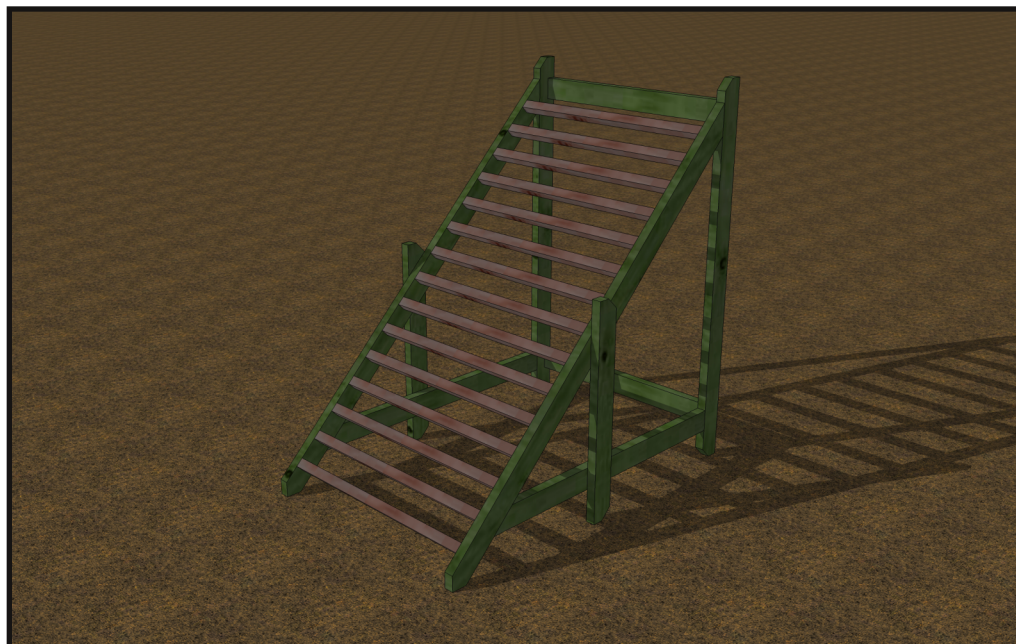


CHIEF'S SHOP PLAN OF THE WEEK



ANGLED TRELLIS



WHAT YOU'LL NEED



LUMBER

10 - 2 x 4 x 8

(availability will vary)

HARDWARE/SUPPLIES

2 1/2" pocket hole screws

2 1/2" deck screws

wood glue

paint, stain, polyurethane, or sealer

TOOLS

table saw

miter saw

sander/belt sander

drill/driver

Kreg Pocket Hole Jig

clamps

square

ABOUT THESE PLANS

On this first page you will see above the project complete. On the [last page](#) you'll find the finished outer dimensions. Be sure to read ALL of the project steps before you start.

To the right is a list of the Lumber, Hardware/Supplies, and Tools you will need to complete this project. A measuring tape and pencil are not included because that should be pretty standard and self explanatory.

Below What You'll Need is the Parts list. This also is included on the [Cutting Diagram](#) page, which is the next to last page of this plan document. Also on the [Cutting Diagram](#) page is an estimate of the cost of the lumber. This estimate doesn't include any other supplies and does not factor in sales tax.

Throughout these plans you'll find the icons below:



LAYOUT

This indicates a diagram detailing the dimensions of a project part and/or the placement for pocket holes, screws, nails, etc.



NOTE

Notes are the instructions for a particular step/section of the project.



TAKE CARE!

This indicates when to pay close attention to the diagrams, take precautions for safety, etc.



MORE PLANS

Want more Chief's Shop plans? Visit chiefs-shop.com and look through the Plans section.

Be sure to "Like" Chief's Shop on facebook by heading over to facebook.com/ChiefsShop.



PARTS



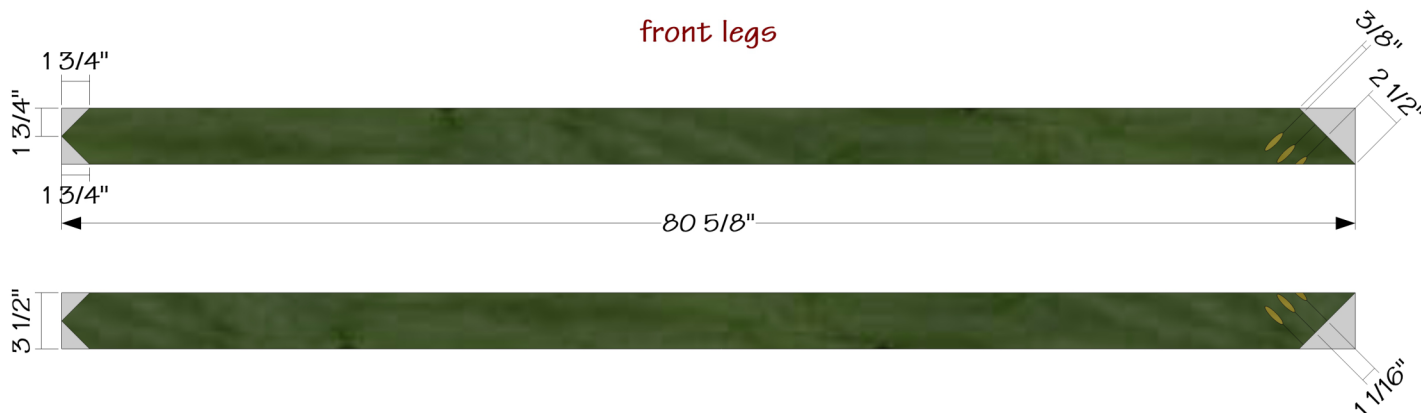
front legs (2) - 1-1/2 x 3-1/2 x 80-5/8
bottom end rails (2) - 1-1/2 x 3-1/2 x 48-1/6
back legs (2) - 1-1/2 x 3-1/2 x 61-3/4
back rails (2) - 1-1/2 x 3-1/2 x 36
slats (15) - 1-1/2 x 1-1/2 x 36
mid legs (2) - 1-1/2 x 3-1/2 x 34

All parts are listed in actual dimensions. Refer to the Cutting Diagram on the last page of this plan as a guide for determining the specific board from which to cut the parts.

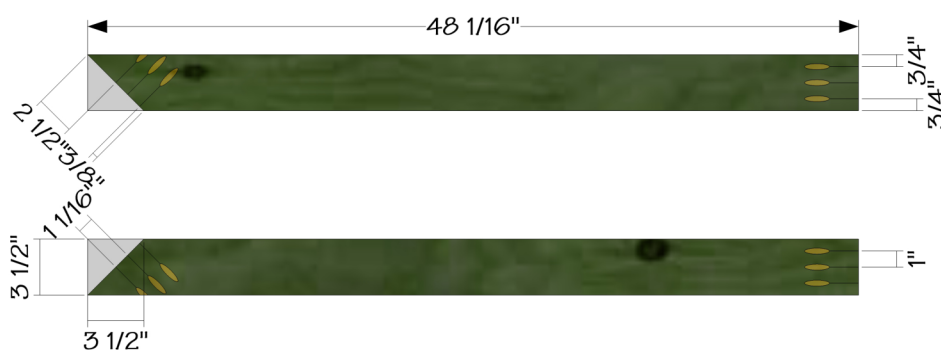
VIDEO

Check out Chief's Shop Videos on YouTube. ([click here](#))

front legs



bottom end rails



back leg

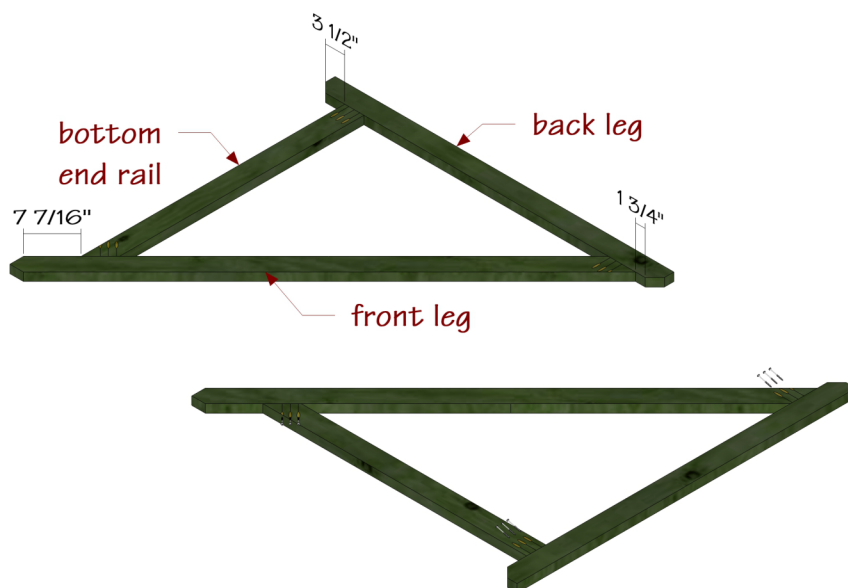


Use the layouts to create the front legs, bottom end rails, and back legs. **Set your pocket hole jig and drill bit for $1\frac{1}{2}"$ stock** for drilling the pocket holes. Note the pocket hole placements on the ends.

ANGLED TRELLIS



Position the parts as shown and attach using 2 1/2" pocket hole screws. Note the assemblies are mirror images of each other.



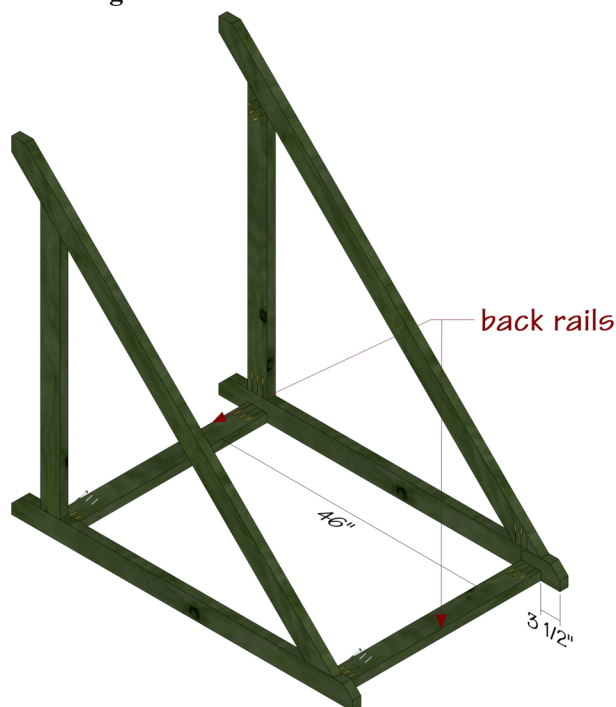
back rail



Use the layout to create the back rails. Set your pocket hole jig and drill bit for 1 1/2" stock for drilling the pocket holes.

NOTE

Position the parts as shown and attach using 2 1/2" pocket hole screws. Place the assembly upright, so the bottom of the front legs are on the ground or work surface.



LAYOUT

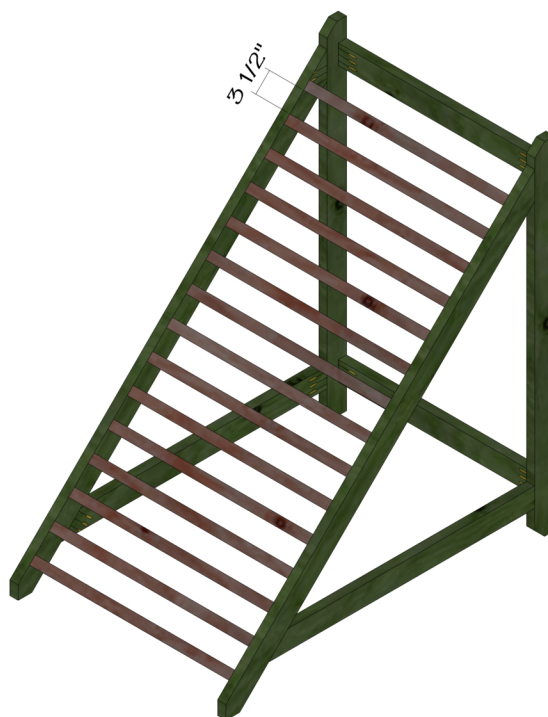
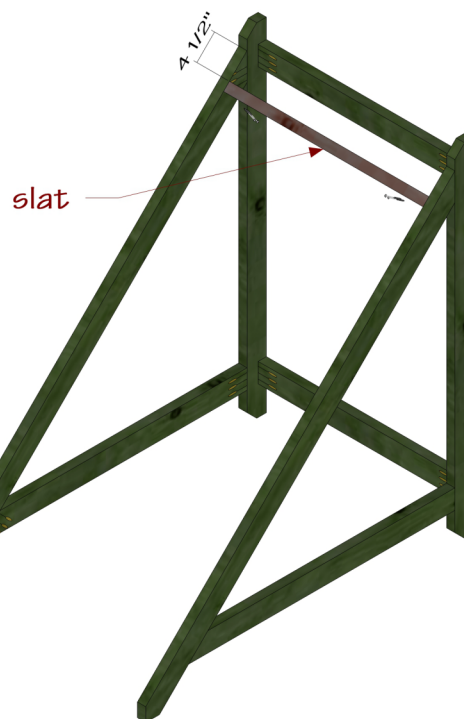


NOTE

Rip and cut to length the slats from 2x4s. Use the layout to create the slats. **Set your pocket hole jig and drill bit for 1 1/2" stock** for drilling the pocket holes.

NOTE

Position the parts as shown and attach using 2 1/2" pocket hole screws. Position the face of the slats with the pocket holes on any plane, except for facing up. Start with the top slat and work your way down. You may need to tilt the assembly back on the edge of the back legs to attach the bottom few slats.



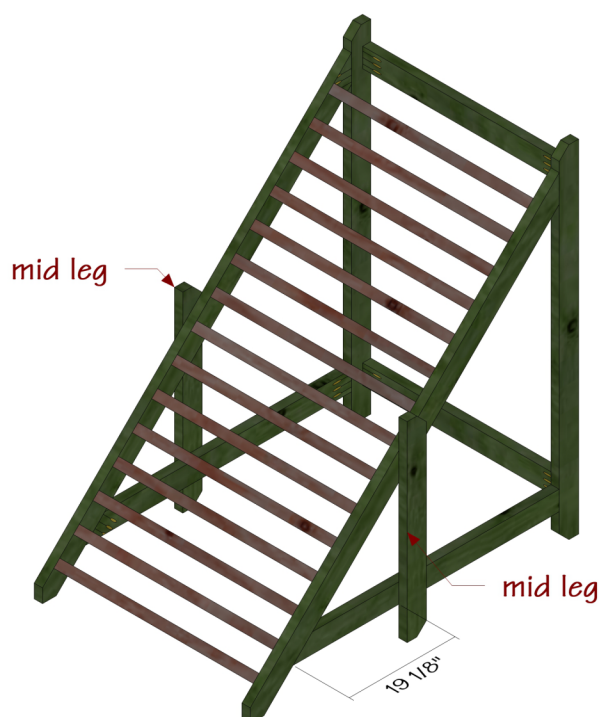
NOTE

Use the layout to create the mid legs.



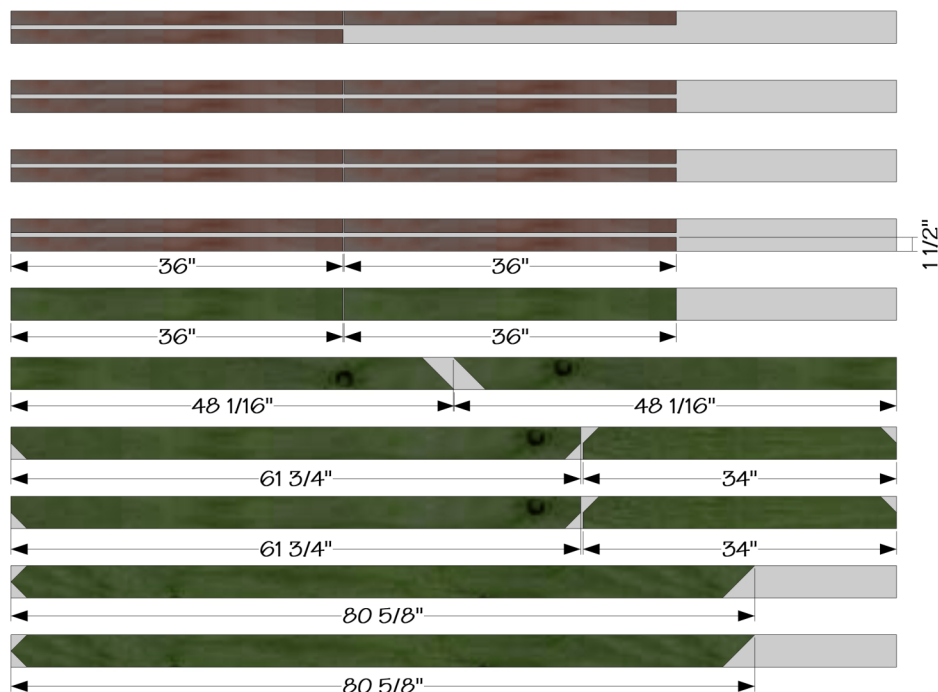
NOTE

Position the mid legs as shown and attach using 2 1/2" deck screws driven through the mid legs and into the front legs and bottom end rails.

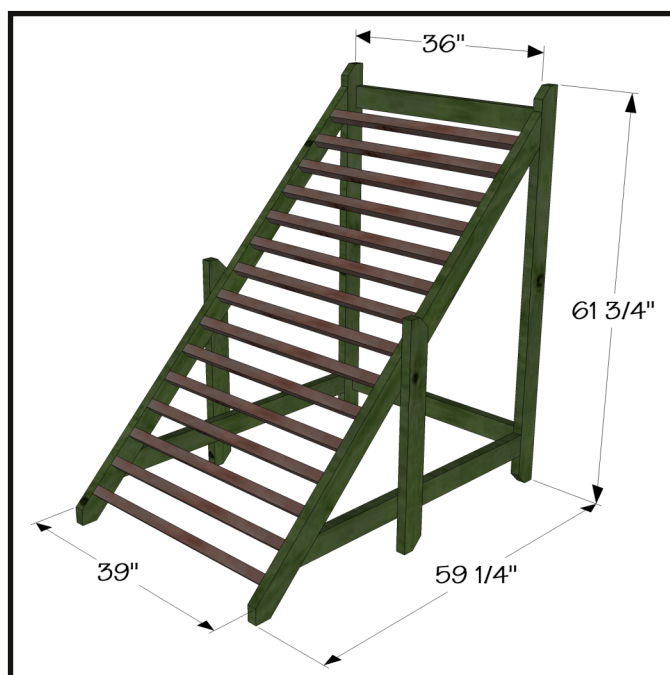




CUTTING DIAGRAM



2 x 4 x 8
(10)



Estimated lumber cost:
starting at \$38

PARTS

front legs (2) - 1-1/2 x 3-1/2 x 80-5/8
bottom end rails (2) - 1-1/2 x 3-1/2 x 48-1/6
back legs (2) - 1-1/2 x 3-1/2 x 61-3/4
back rails (2) - 1-1/2 x 3-1/2 x 36
slats (15) - 1-1/2 x 1-1/2 x 36
mid legs (2) - 1-1/2 x 3-1/2 x 34

All parts are listed in actual dimensions. Refer to the Cutting Diagram on the last page of this plan as a guide for determining the specific board from which to cut the parts.



Follow ALL SAFETY GUIDELINES AND RECOMMENDATIONS provided by the manufacturers of your tools, and any chemicals such as glue and finishes you use in this project. YOU are responsible for your safety, so use common sense when working in the shop!